

Women's Heart Health along the lifecourse



www.hartvoorvrouwen.nl

angela.maas@radboudumc.nl

Leiden December 7th - 2023



Disclosure of speaker's interests

(Potential) conflict of interest	None/See below
Potentially relevant company relationships in connection with event	<u>Company names:</u>
Sponsorship or research funding	
Fee or other (financial) payment	Omron, Organon, Novartis
Shareholder	
Other relationship, i.e. ...	

Sept 2021

Debra Malina, Ph.D., *Editor*

Medicine Is Not Gender-Neutral — She Is Male

Kiki M.J. Lombarts, Ph.D., and Abraham Verghese, M.D.

March 2022

“Historically, the anatomy and physiology of bodies with vaginas have been neglected.”

See Perspectives page 1124

**Roles Go Back to Ancient Greece.
Women Are Still Paying the Price
Today**



2022 NPO Doc **Reference man**

Gendered Innovations | Stanford University

What is Gendered Innovations?

SEX & GENDER ANALYSIS

General Methods

Specific Methods

Terms

Checklists

CASE STUDIES

Science

Health & Medicine

Engineering

Environment

INTERSECTIONAL DESIGN

POLICY RECOMMENDATIONS

VIDEOS



Chronic Pain: Analyzing How Sex and Gender Interact



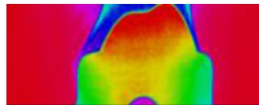
Colorectal Cancer: Analyzing How Sex and Gender Interact



Covid-19: Analyzing Sex and Analyzing Gender



Prof Londa Schiebinger, History Science Stanford University



De-Gendering the Knee: Overemphasizing Sex Differences as a Problem



Dietary Assessment Method: Analyzing How Sex and Gender Interact



Gender-Related Variables for Health Research



Heart Disease in Diverse Populations



Medical Technology: Intersectional Approaches



Nanomedicine: Analyzing Sex



Nanotechnology-Based Screening for HPV: Rethinking Research Priorities



Nutrigenomics



Osteoporosis Research in Men: Rethinking Standards and Reference Models



Prescription Drugs: Analyzing Sex & Gender



Systems Biology: Analyzing How Sex and Gender Interact

1. Chronic inflammatory diseases such as endometriosis are associated with a higher CVD risk

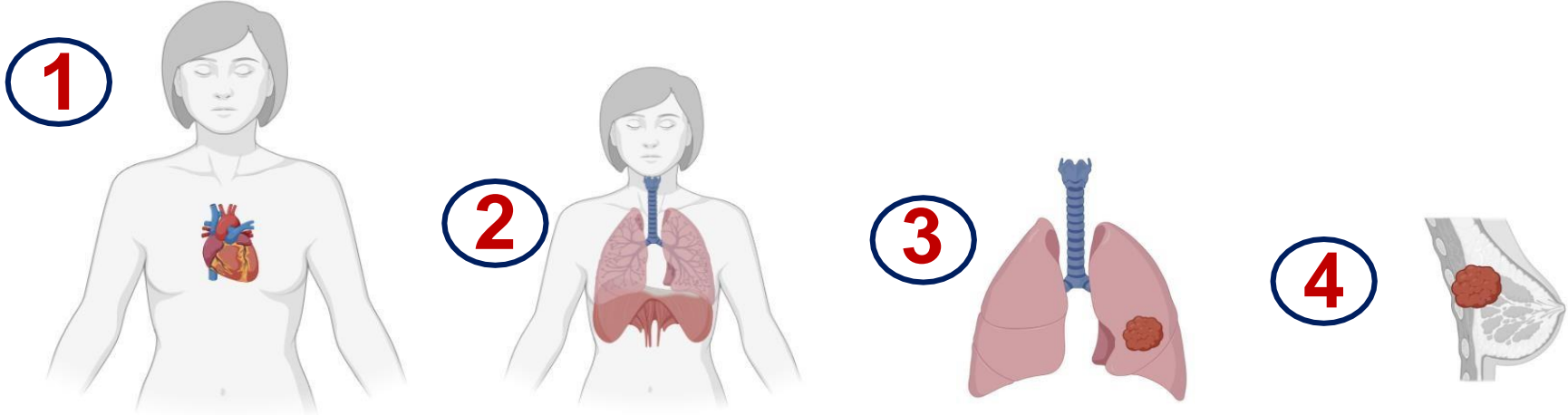
-
1. Chronic inflammatory diseases such as endometriosis are associated with a higher CVD risk
 2. 40% of women with preeclampsia/HELLP in pregnancy already have hypertension by the age of 40

-
1. Chronic inflammatory diseases such as endometriosis are associated with a higher CVD risk
 2. 40% of women with preeclampsia/HELLP in pregnancy already have hypertension by the age of 40
 3. The onset of hypertension during menopause transition is asymptomatic

-
1. Chronic inflammatory diseases such as endometriosis are associated with a higher CVD risk
 2. 40% of women with preeclampsia/HELLP in pregnancy already have hypertension by the age of 40
 3. The onset of hypertension during menopause transition is asymptomatic
 4. Determining the coronary calcium score with CT (CAC score) can be a tool to assess whether it is safe to give MHT

Cardiovascular disease is the leading cause of mortality in women

Total Deaths in Women in USA 2016: 1,236,003

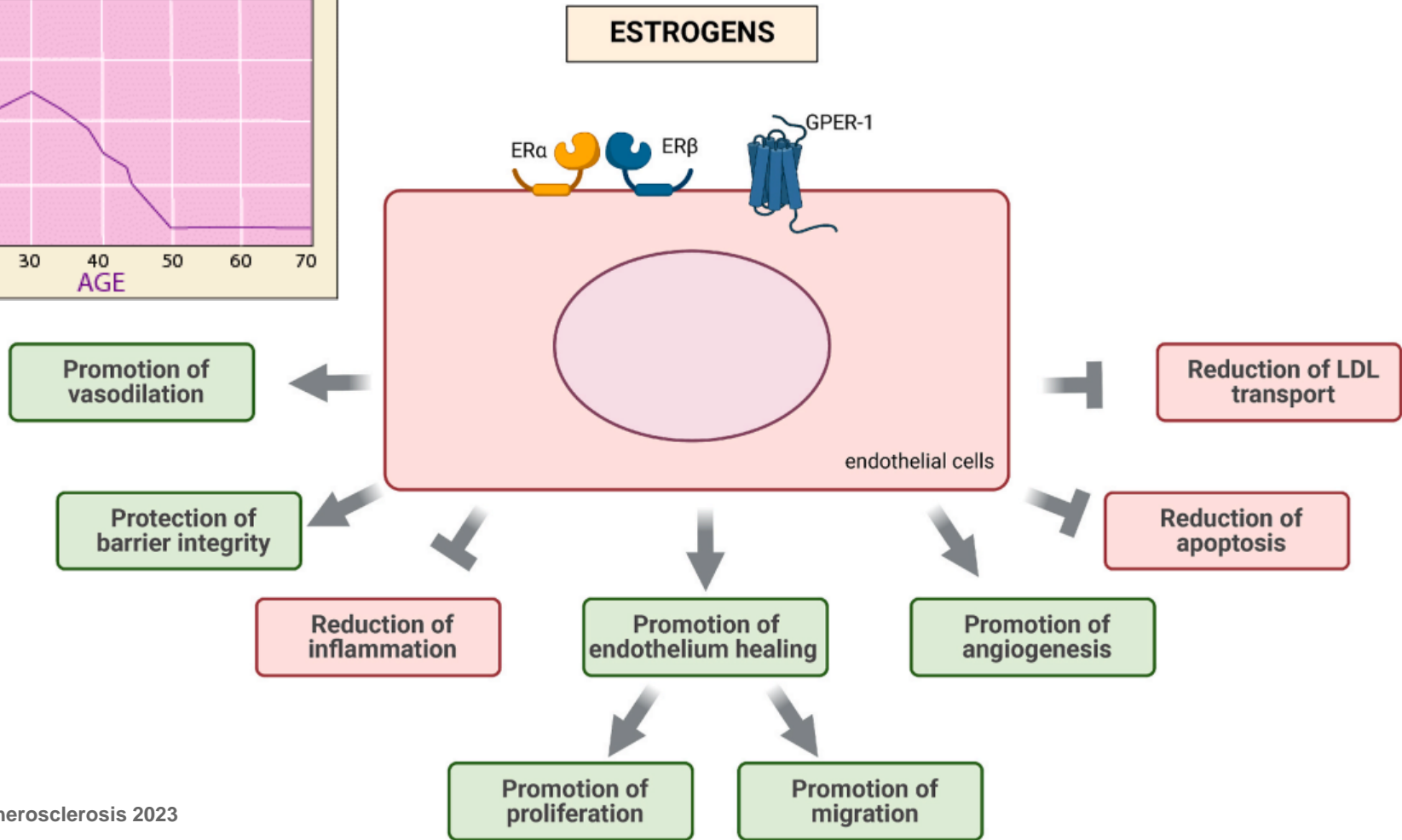
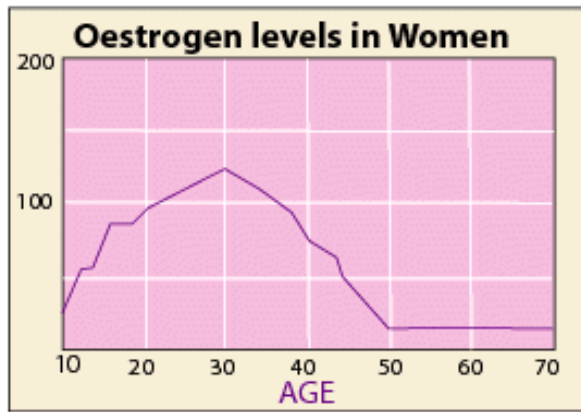


Cardiovascular disease
412,244 deaths

Chronic Lung Disease
81,551 deaths

Lung Cancer
70,500 deaths

Breast Cancer
40,920 deaths



Sex hormones dysfunction and CVD risk:

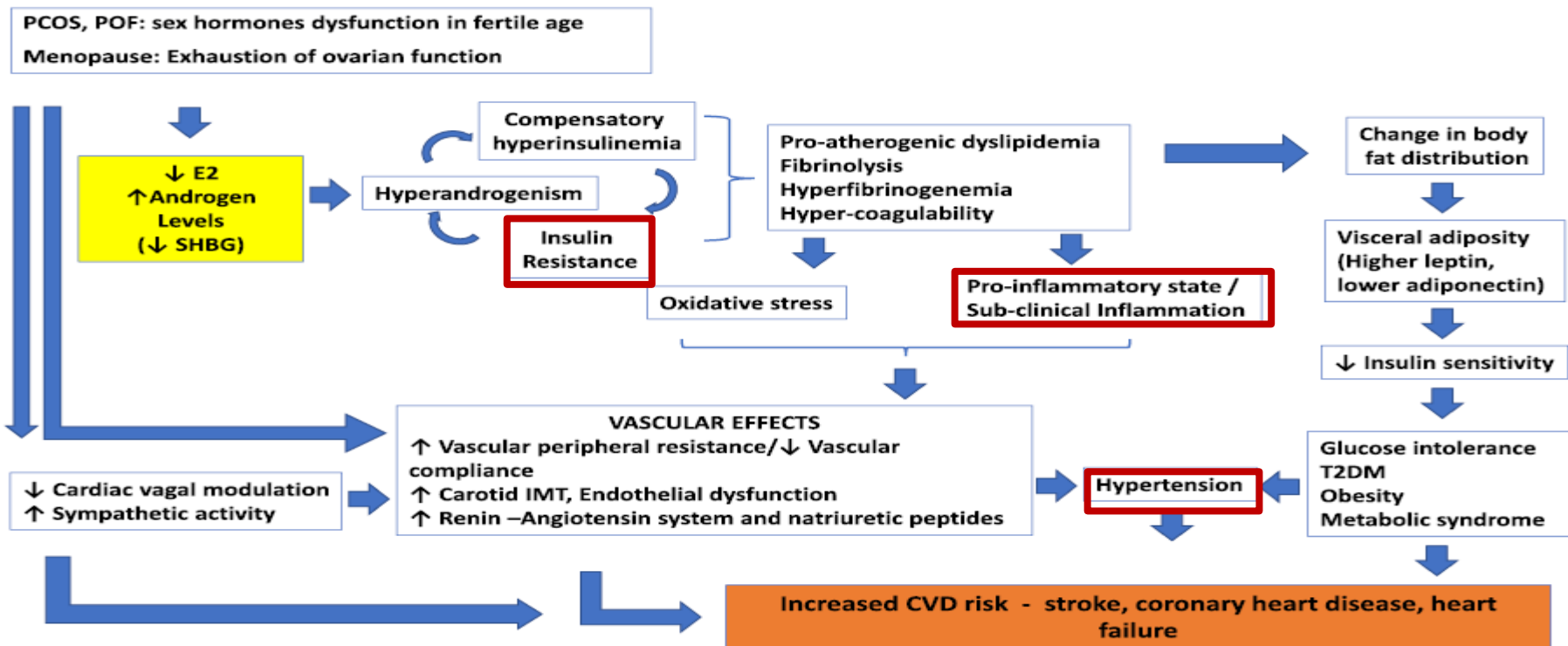
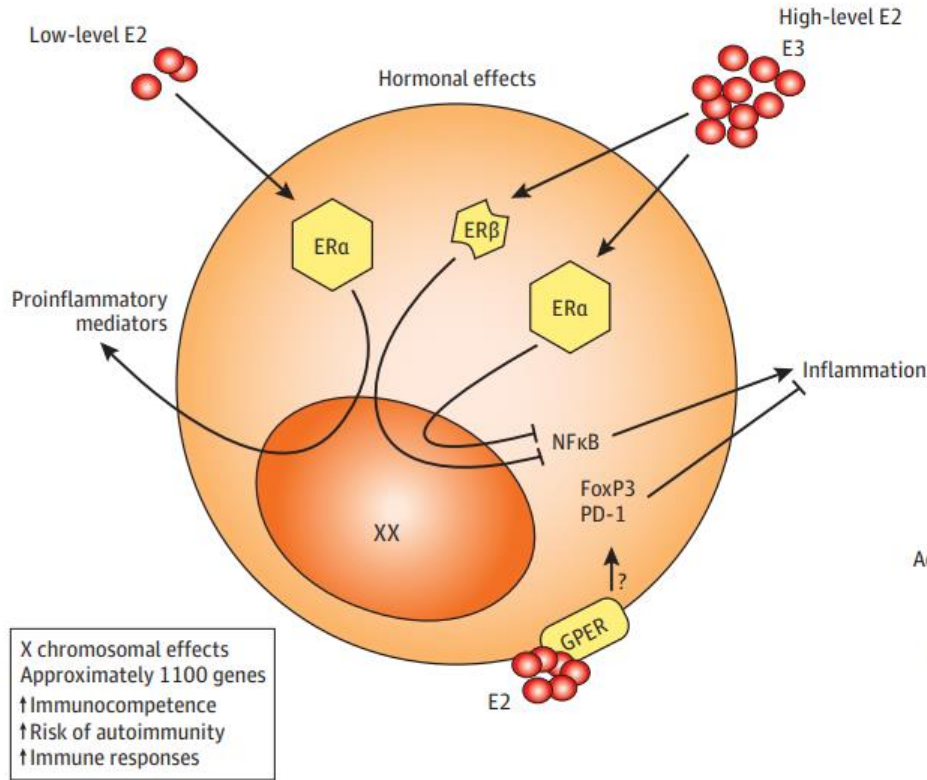


Figure 3. Interaction of Hormones by Sex With the Immune System

A Female immune cell



B Male immune cell

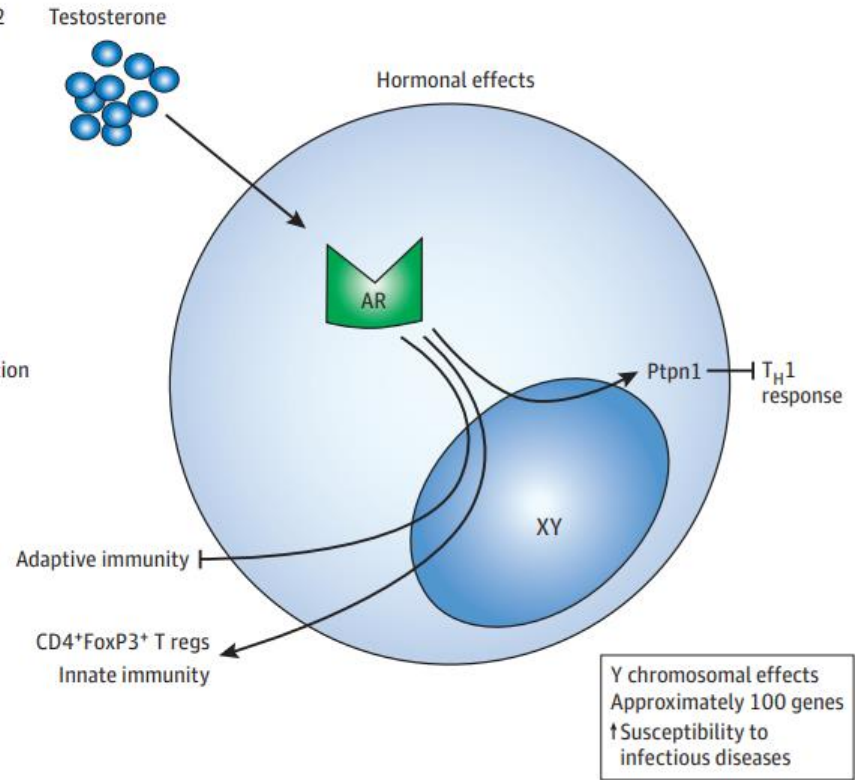
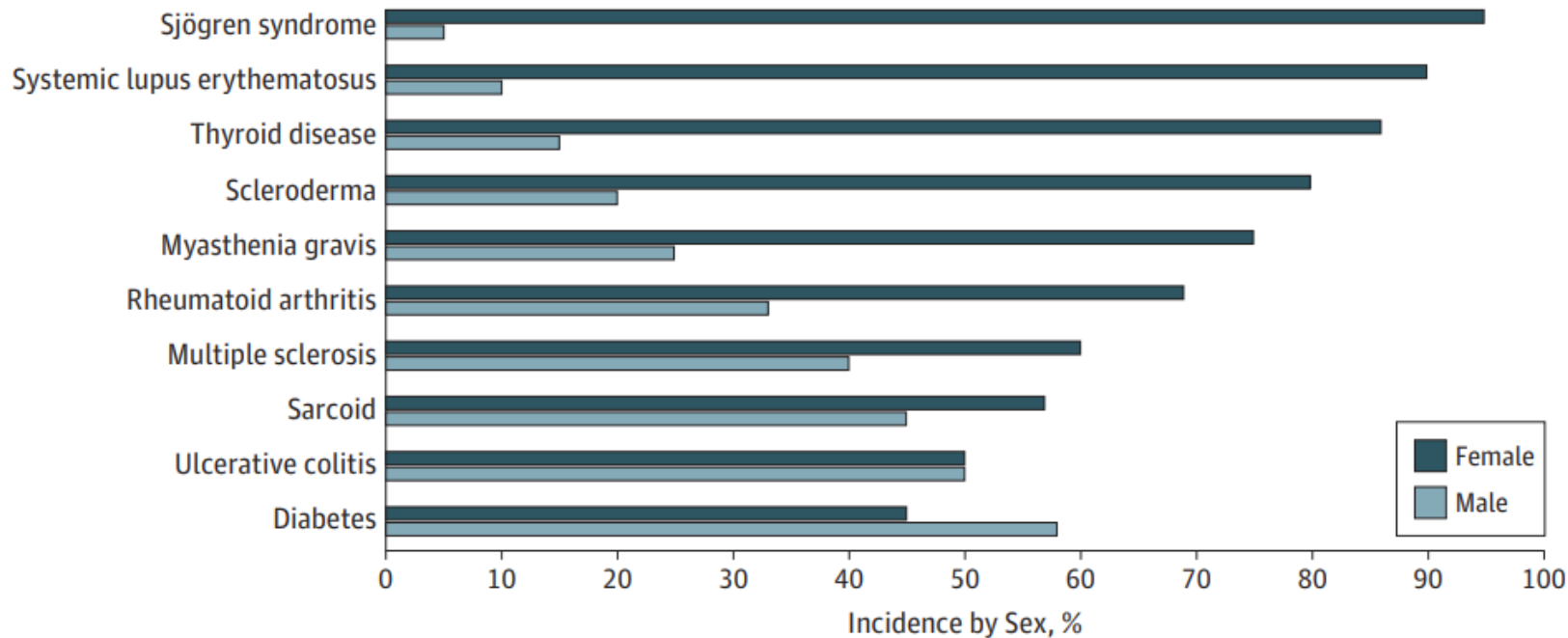
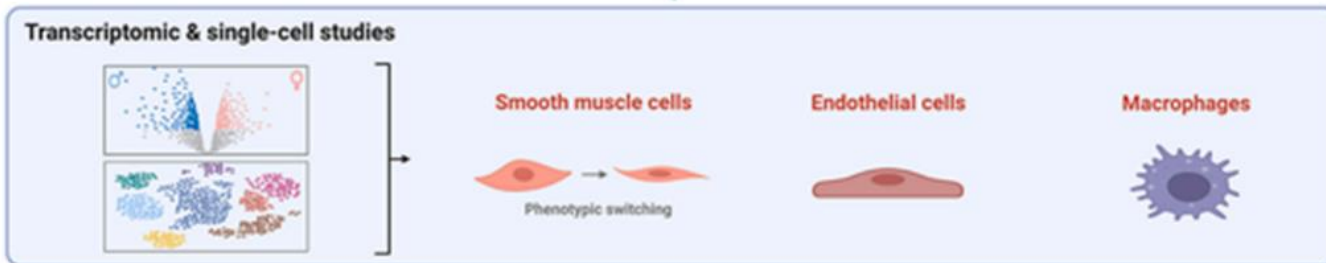
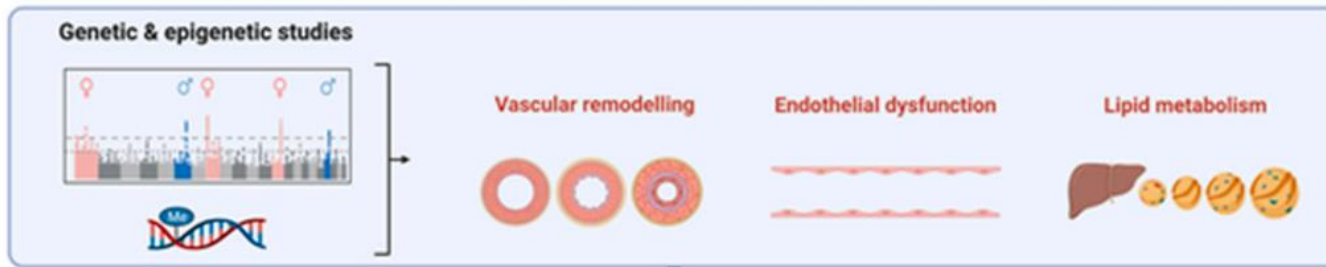


Figure 2. Distribution of Major Autoimmune Diseases by Sex

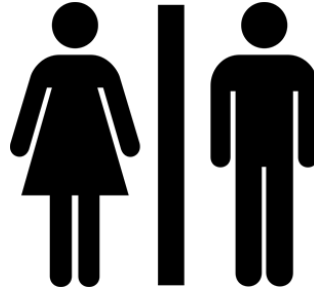


Sex differences in CAD

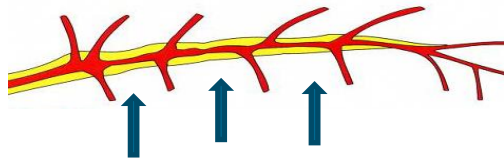




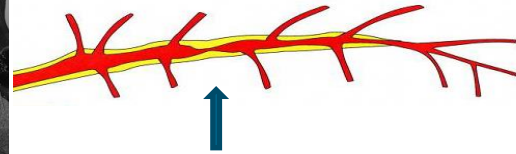
Spasm in the epicardial and microvasculature of the coronary arteries (80% women)



Stenoses in the epicardial coronary arteries (80% men)

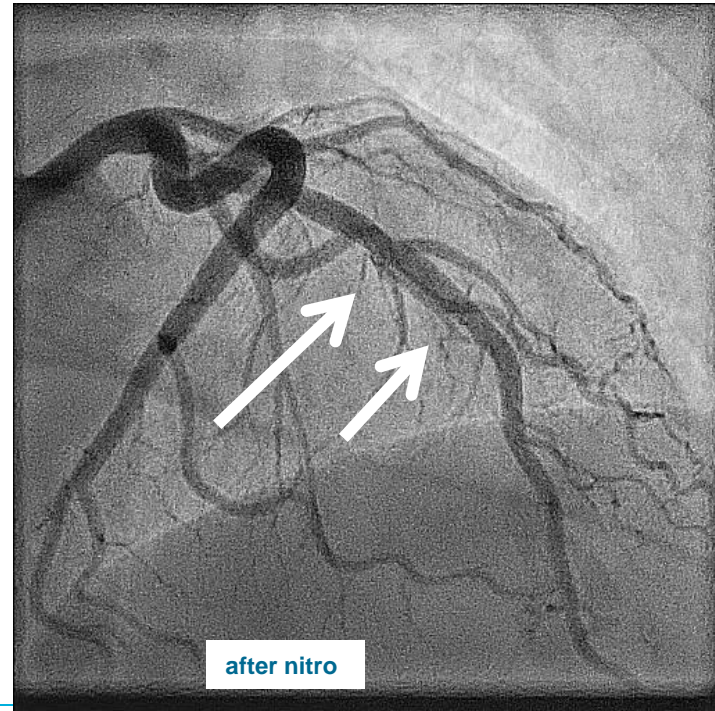
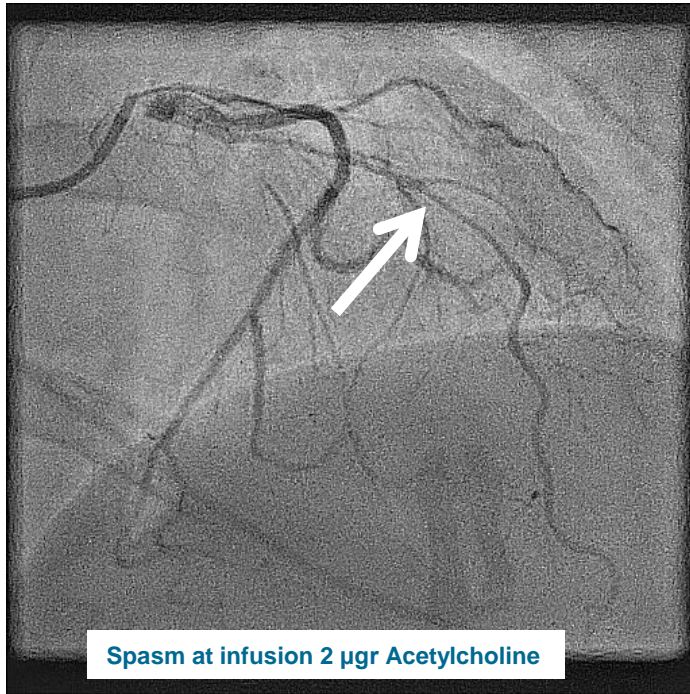


Diffuse atherosclerosis



Focal stenosis

**Woman 46 yrs, since 4 yrs misunderstood symptoms of chest pain.
After 3 CAGs sent to a psychiatrist ...**



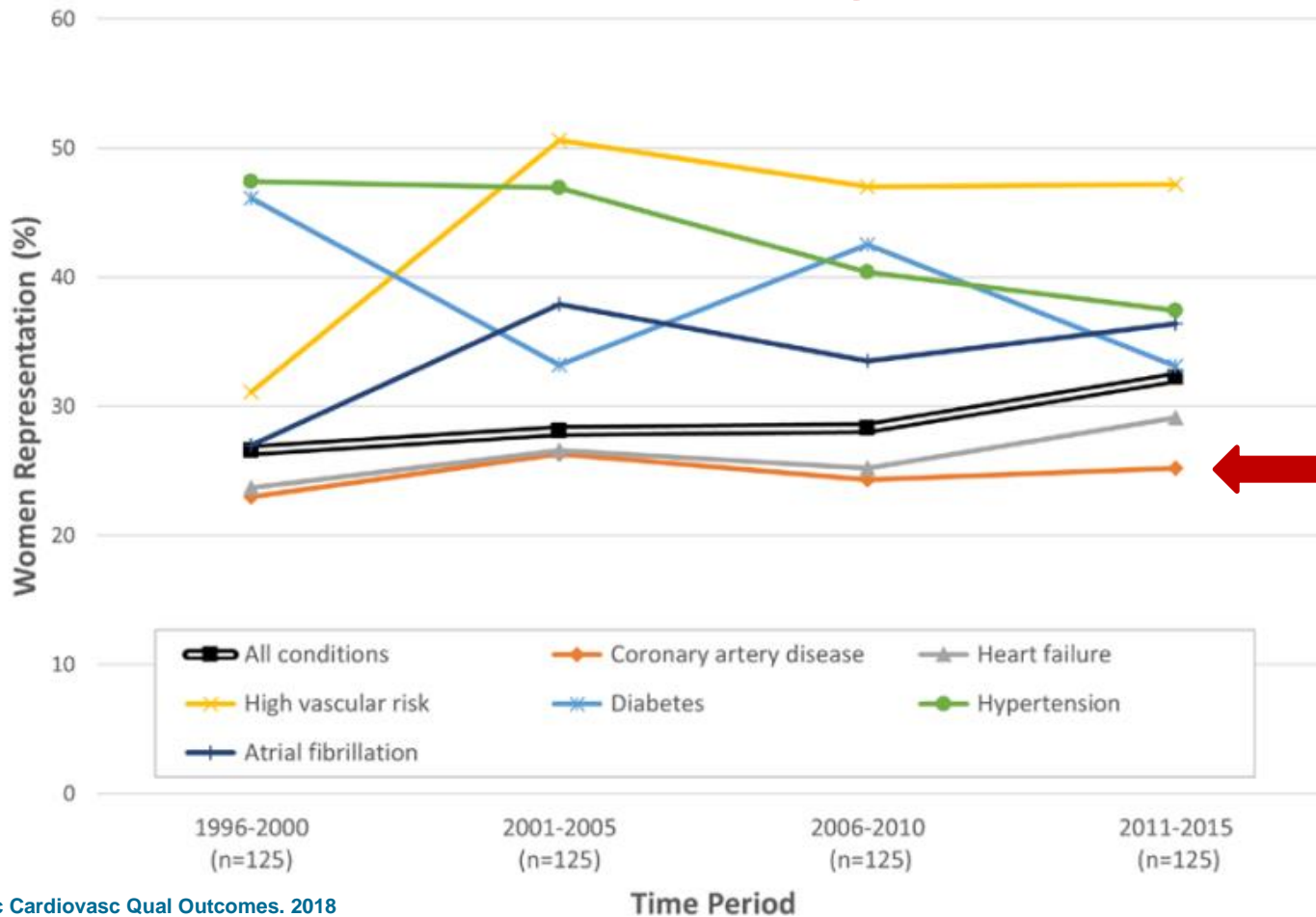
Are symptoms in women 'atypical'??



- fluctuating pain
- at rest & exercise
- shortness of breath
- extreme tiredness
- role mental stress

No, symptoms are **characteristic** for the underlying disease

Female representation in cardiology trials over time



HYPERTENSION

SIGNS AND SYMPTOMS



Symptomatic hypertension is often interpreted as menopause

- fatigue, lack of energy
- continuous chest pain : ‘bra feels too tight’
- pain between shoulder blades
- fluid retention : ankles, stomach, hands, eyelids etc
- palpitations, PAF
- shortness of breath
- sweating, hot flushes
- insomnia
- headaches, dizziness



General risk factors in women

- Obesity *
- Diabetes*
- Hypertension*
- Dyslipidaemia
- Age
- Inactivity
- Family history
- Smoking*



Risk Factors in Young women

- Pre-eclampsia
- Gestational diabetes
- PCOS;endometriosis
- Oral contraceptive pill use
- Functional hypothalamic amenorrhea
- Autoimmune conditions
- Psychosocial risks such as depression and stress
- Breast cancer therapy



Risk factors in middle age women

- Pre-menopause
- Early menopause
- Vasomotor symptoms +++



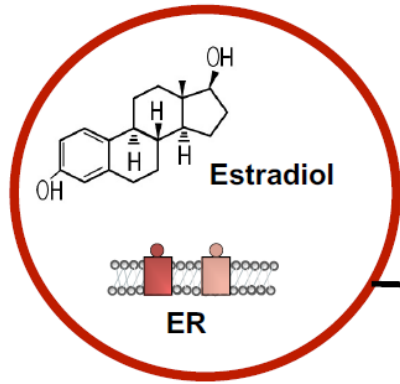
Risk factors in older women

- Post-menopausal

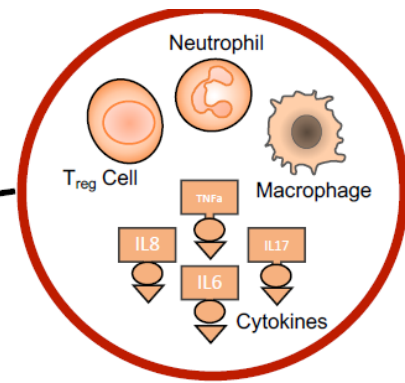
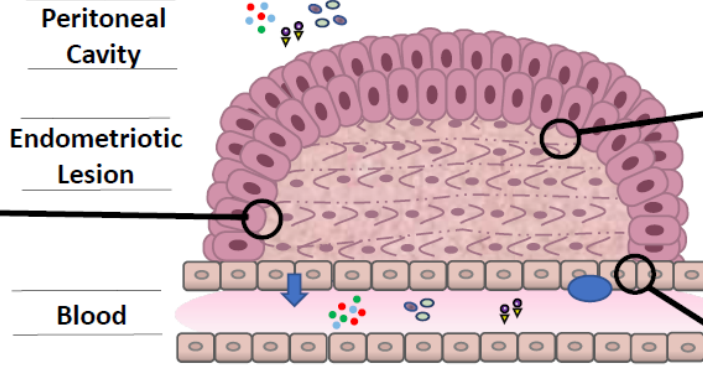


Excess CVD morbidity and mortality

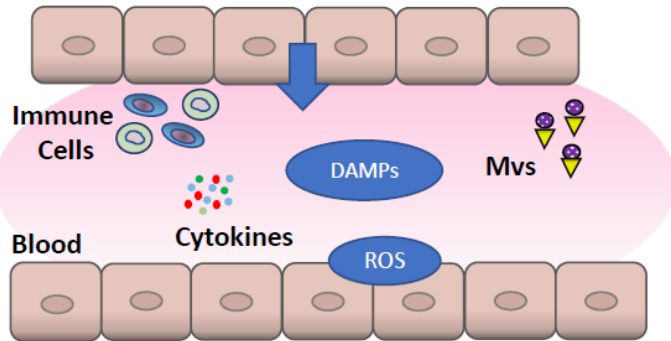
Endometriosis



Endocrine Signals



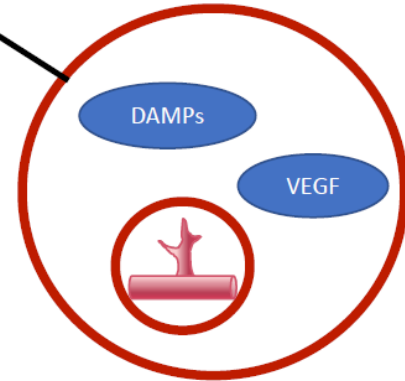
Pro-Inflammatory Signals



Systemic Inflammation
Pro-angiogenic Signals
Immune Dysfunction

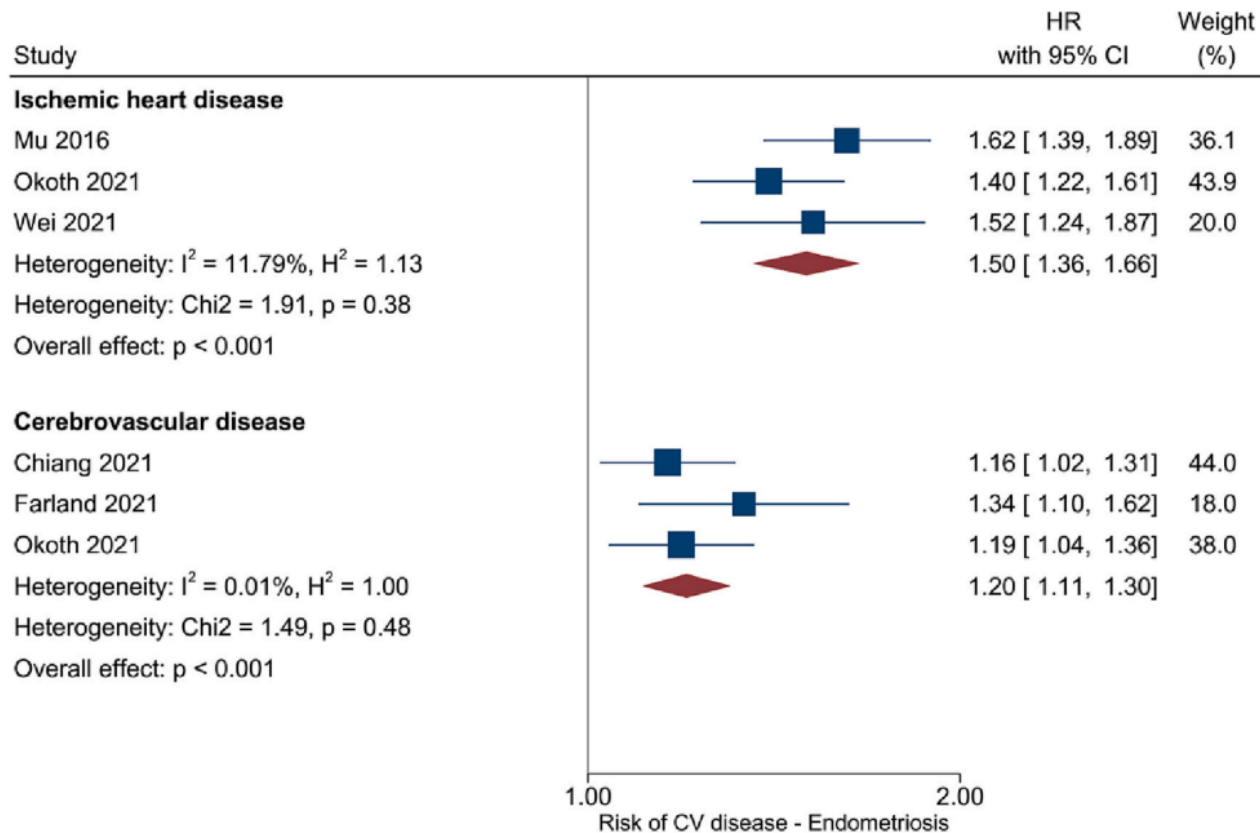


Cardiovascular Disease ?

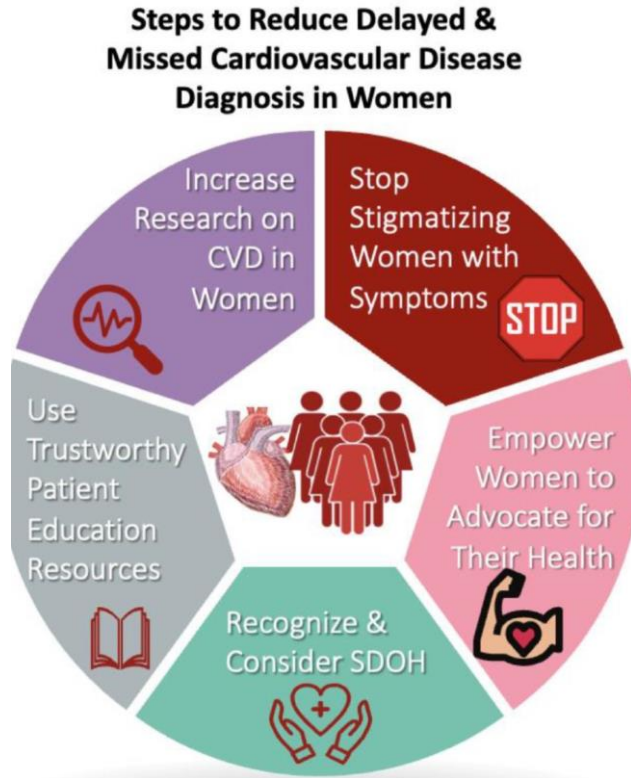


Pro-angiogenic Signals

Meta-analysis endometriosis and CVD risk:



11 Febr 2022: socio-economic impact of endometriosis



Emmanuel Macron

@EmmanuelMacron

Officiel du gouvernement - France

L'endométriose.

Ce n'est pas un problème de femmes, c'est un problème de société. La stratégie nationale que nous lançons porte l'espoir d'une meilleure qualité de vie pour des millions de filles et de femmes.

[Translate Tweet](#)



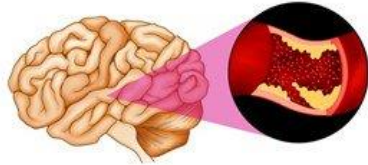
Hypertensive Disorders of Pregnancy



Chronic hypertension
370% increase

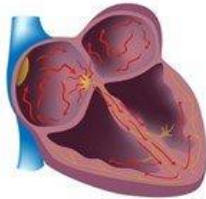


Coronary heart disease
250% increase



Stroke
81% increase

All-cause death
50% increase



Atrial arrhythmias
50% increase

Cardiovascular death
221% increase

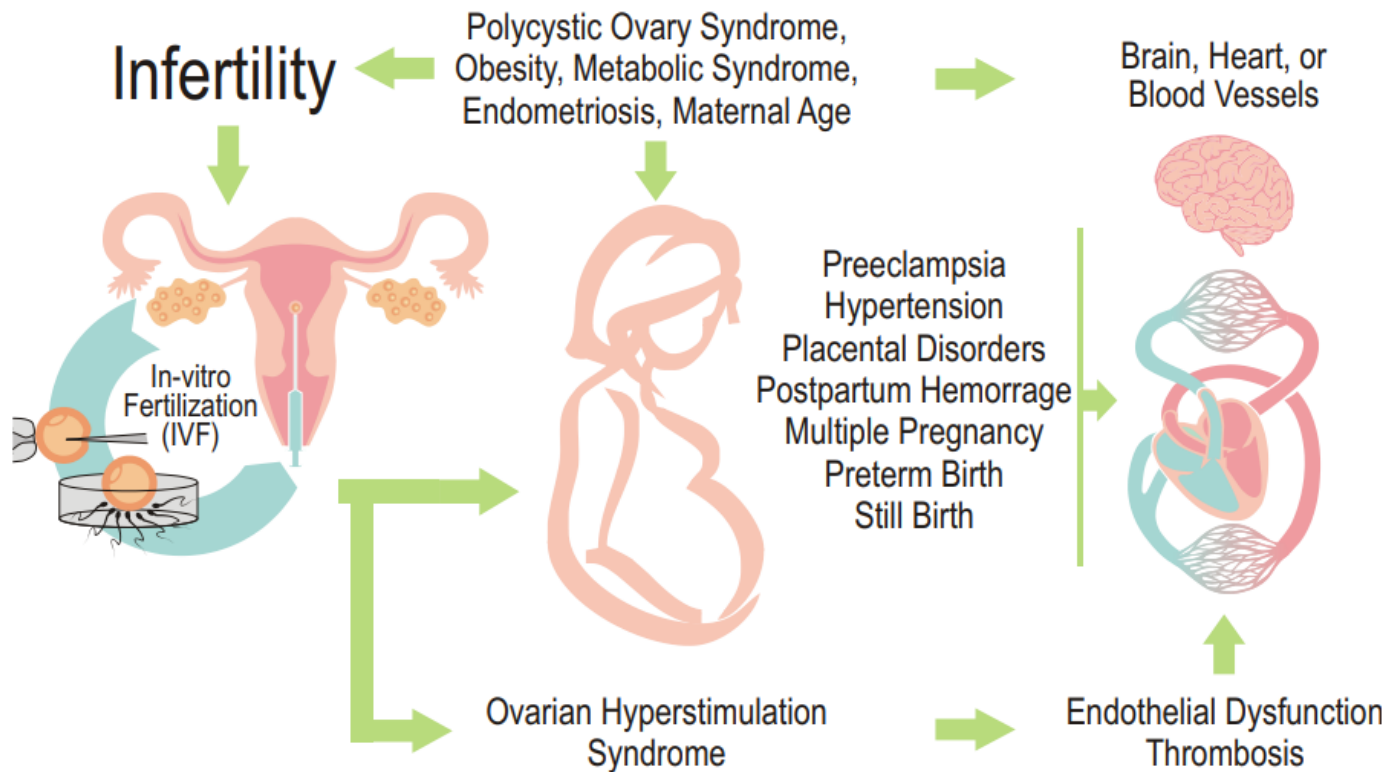


Heart failure:
400% increase



Coutinho T et al. Curr Treat Options Cardiovasc Med. 2018

Concept linking infertility subtypes, infertility treatment, pregnancy outcome, and longer-term cardiovascular health:

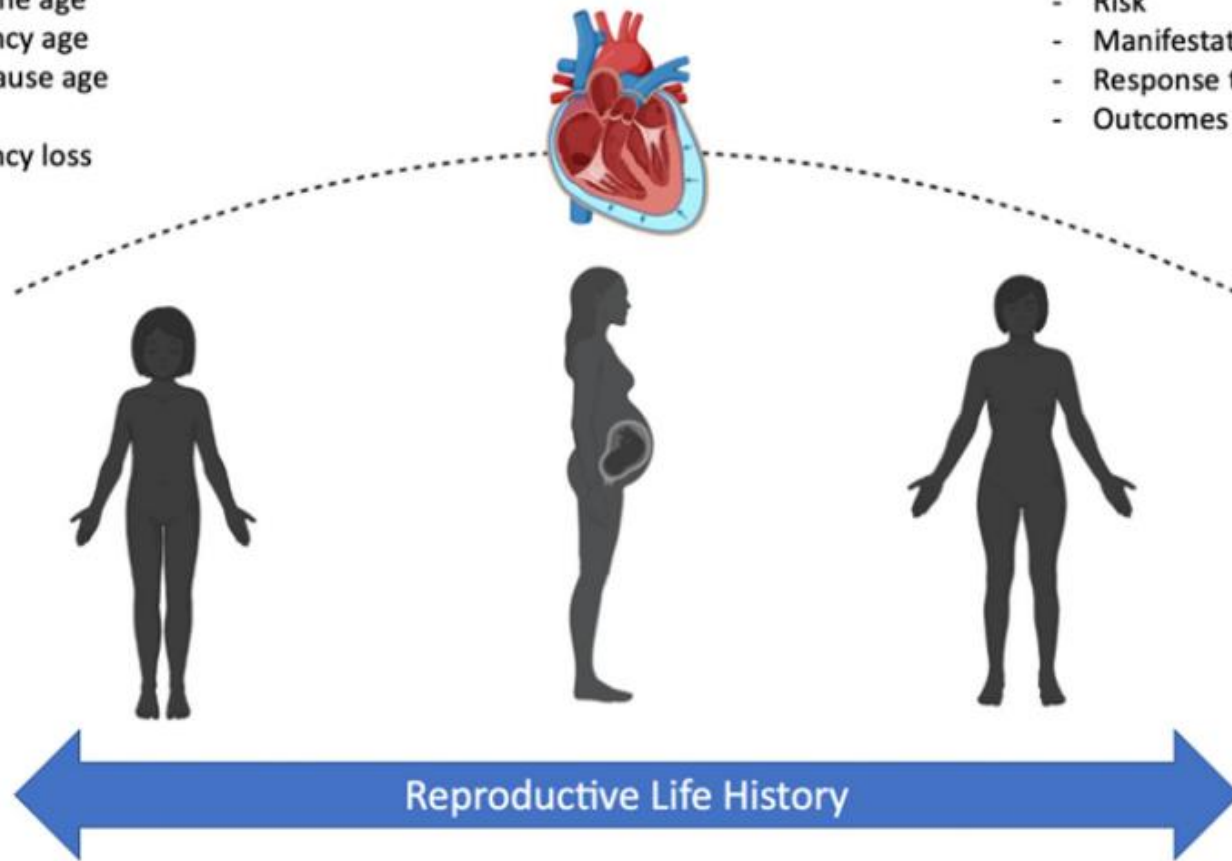


Relevant Reproductive Factors

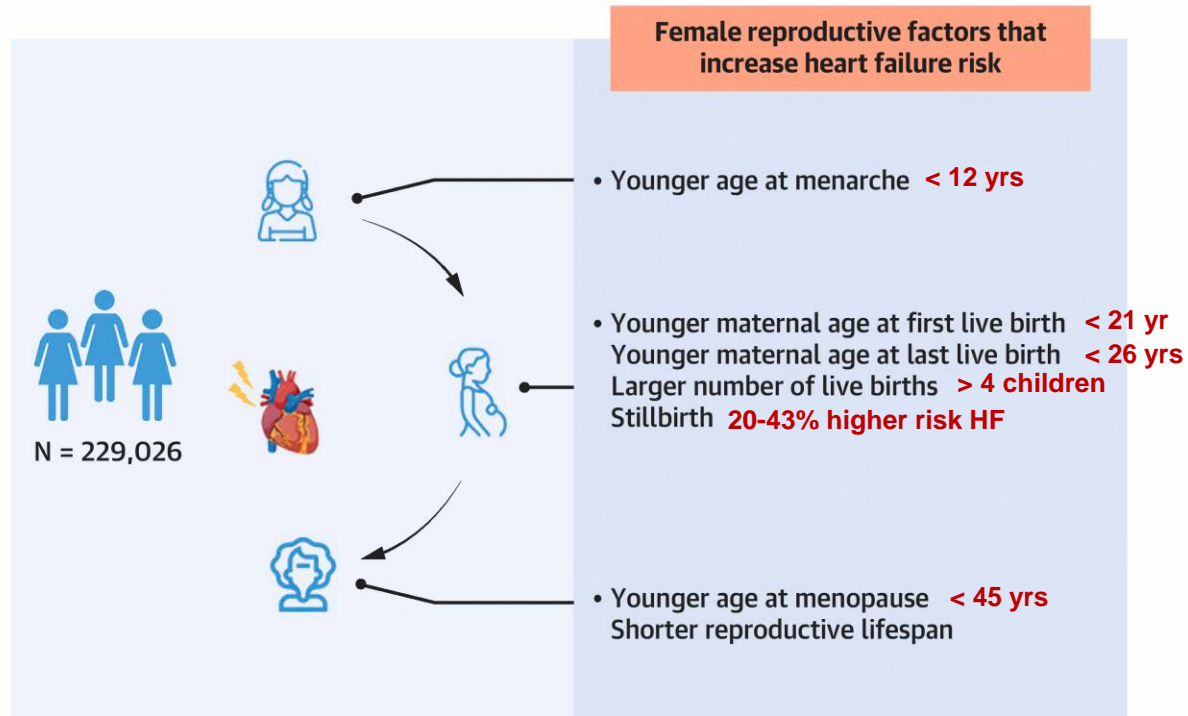
- Menarche age
- Pregnancy age
- Menopause age
- Parity
- Pregnancy loss

Heart Failure

- Risk
- Manifestation
- Response to Therapy
- Outcomes



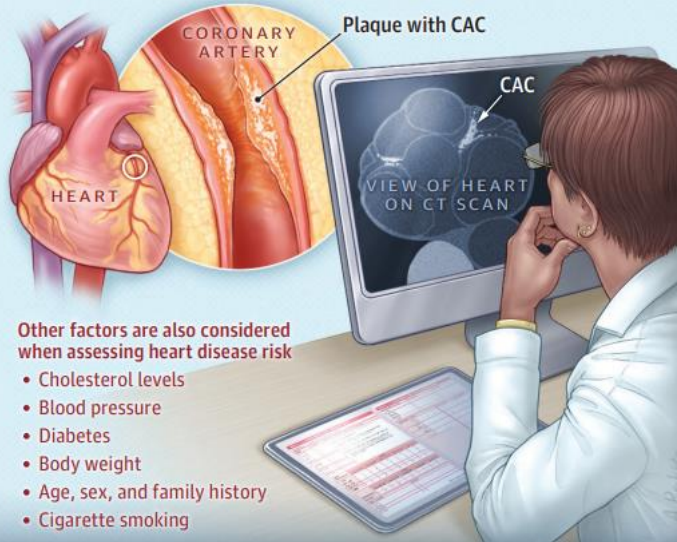
CENTRAL ILLUSTRATION: Female Reproductive Factors and Risk of New-Onset Heart Failure: Findings From UK Biobank



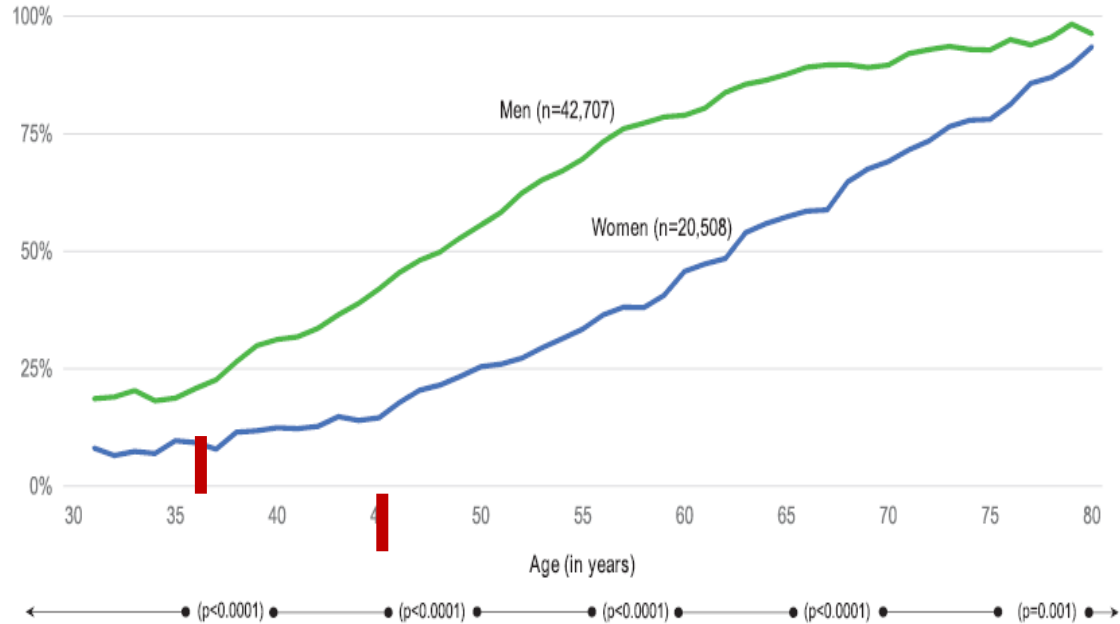
CAC score with CT can be helpful to assess individual CVD risk

Coronary artery calcium test for heart disease risk assessment

Cholesterol plaque buildup can block coronary arteries in the heart, increasing the risk of myocardial infarction (or heart attack). Coronary artery calcium (CAC) in the plaques can be seen and measured on a computed tomography (CT) scan to help guide assessment and treatment of those at risk for heart disease.



CAC score with CT scan in men/women over lifetime:



1/3 of women after PE has CAC > 0 at 50 years of age

Cardiovascular Risk Assessment

Traditional Risk Factors:

- Hypertension
- Dyslipidemia
- Diabetes
- Obesity
- Smoking
- Sedentary lifestyle
- Family history
- Poor diet
- Environmental pollution

Pregnancy-Related Risk Factors:

- Preeclampsia
- Gestational hypertension
- Gestational diabetes
- Preterm delivery
- Delivery of small for gestation age infant
- Recurrent spontaneous pregnancy loss

Other Female-Specific Factors:

- Early menarche
- Premature menopause
- Hormone-based contraception
- Polycystic ovarian syndrome
- Autoimmune disorders
- Chronic inflammatory conditions
- Depression and other mental health conditions

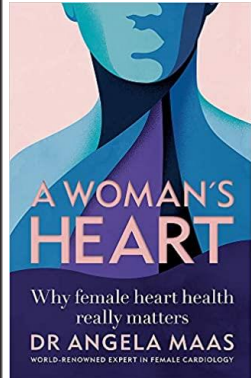
Social Determinants of Health

Cultural Issues and Norms

Language and Health Literacy

Race and Ethnicity Contribution

Heterogeneity within each of these populations resulting in variation in risk factors and CVD impact
Underrepresentation in treatment trials and as a result inadequate data on optimal treatments to reduce CVD risks





Department
of Health &
Social Care

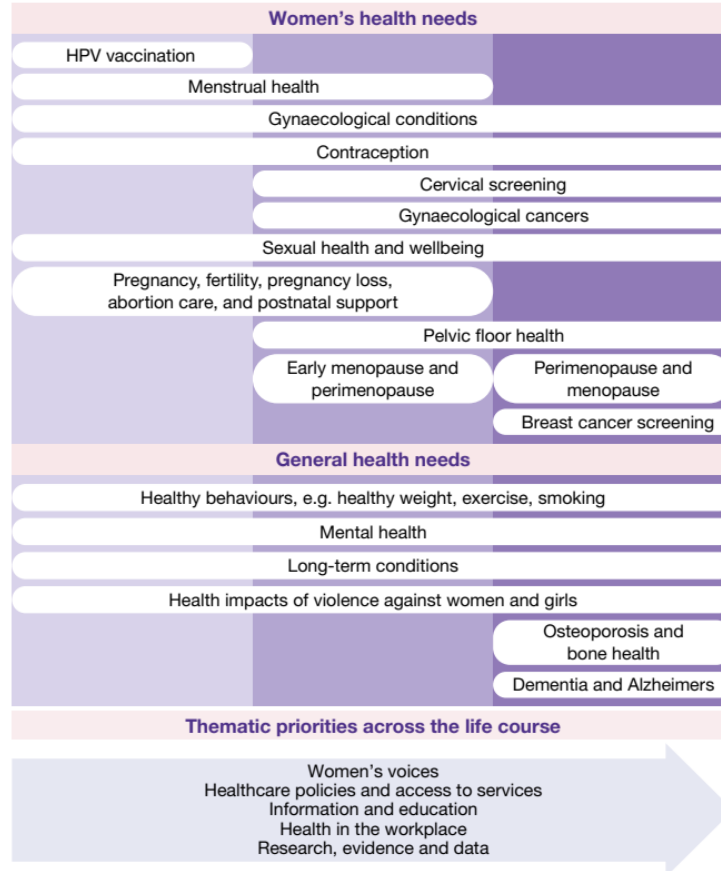
Women's Health Strategy for England

Published August 2022

CP 736



Women's health across the life course





NOVEMBER 13, 2023

FACT SHEET: President Joe Biden to Announce First-Ever White House Initiative on Women's Health Research, An Effort Led by First Lady Jill Biden and the White House Gender Policy Council

NL Health~Holland

Interesse in Women's Health?

- Iris Sommer (i.e.c.sommer@umcg.nl)
- Hester den Ruijter (h.m.denruijter-2@umcutrecht.nl)
- Carmen van Vilsteren (c.f.m.v.vilsteren@tue.nl)

