

A hand wearing a blue nitrile glove is shown in the foreground, holding a white and black ball-and-stick molecular model. The background is filled with several other similar molecular models, some in focus and some blurred, set against a light blue background. The overall scene suggests a laboratory or research environment.

lifesciences@work

We help to build
your life sciences
business

A close-up photograph of a person's hand holding a green pen, poised to write on a document. The document appears to be a business plan or a flowchart, with some text and lines visible. The person is wearing a silver watch with a blue dial. The background is slightly blurred, showing another person's hand and part of a table.

venture
challenge



The Venture Challenge generates impact for society by turning research results into a solid business case

In the Venture Challenge you learn to analyze customer value propositions, to identify key risks and assumptions, to develop a validation and de-risking strategy, to build a venture plan and you are connected to experts, experienced entrepreneurs and funders.

venture
challenge

Read our special e-magazine for more results and success stories of 15 years LS@W & Venture Challenge



venture challenge

The Venture Challenge and LS@W has sparked a new generation of Life Sciences entrepreneurs



'It took four months before I said yes. I initially didn't want to do it because my experience lies in MedTech. I eventually accepted the role of CEO with the condition that I would have Dinko Valerio, a highly experienced pharma entrepreneur, as my business coach.'

- Eline van Beest, CEO Hybridize Therapeutics and alumna of 2010



'Without my mentor by my side, we could never have gotten CE approval in two years and FDA clearance within three years.'

- Bram Schermers, CEO Sirius Medical and alumna of 2015



'What it means to bring a drug to market is something no course can teach. That is why having an experienced entrepreneur on board is an absolute must.'

- Marc van Moorsel, COO of TargED and alumna of 2018



INTRODUCING

The LifeSciences@Work Advisory Board



Hans Schikan

Experienced Entrepreneur
Chairman, Board member,
Former Special Envoy for
Vaccines
[LinkedIn](#)



Carmen van Vilsteren

Experienced Entrepreneur
Investor
Chair Topsector Life Sciences &
Health
[LinkedIn](#)



Nettie Buitelaar

Experienced Entrepreneur
CEO at Biotech Booster
[LinkedIn](#)



Allard Kaptein

Experienced Entrepreneur
CEO at Genase Therapeutics
CStratO at IMMI05
Therapeutics | Chair of
Board at Immagine
[LinkedIn](#)



Varsha Thakoersing

Alumnus
CEO at IMCOMET | CEO at
Caladrius Technologies
[LinkedIn](#)



Eric van der Veer

Alumnus
Founder and Chief Innovation
Officer at Hybridize Therapeutics
[LinkedIn](#)



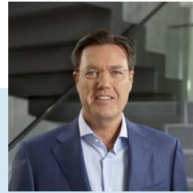
Lonneke Baas

ROM
Senior Business Developer
InnovationQuarter
[LinkedIn](#)



Kim Lucassen

Legal
Partner at Loyens & Loeff - Life
sciences
[LinkedIn](#)



Geert-Jan Mulder

Investor
Managing Partner Forbion
[LinkedIn](#)



Brigitte Drees

Science Park
CEO at Pivot Park and Pivot
Park Screening Centre
[LinkedIn](#)



Joram Sjoerts

University
Managing Director Valorisation
at Radboud university medical
center
[LinkedIn](#)

lifesciences@work

NL

Health~Holland



Some of the people that have already contributed as
speaker, expert, mentor, or jury



lifesciences
@work

Partners LifeSciences@Work



Ministerie van Economische Zaken
en Klimaat

Health~Holland

LOYENS  LOEFF

pivotpark



GameChanger
CHALLENGE

 iVENTUS

 MEDTECHPARTNERS

venture
challenge

Apply for the Venture Challenge



PROEFDIERVRIJ

VENTURE CHALLENGE

2024



Venture Challenge
Spring 2024

8 jan 2024, proefdiervrij.nl

7 Feb 2023, nwo.nl/vc



venture
challenge

And now for the
Venture Challenge
Fall 2023 winner

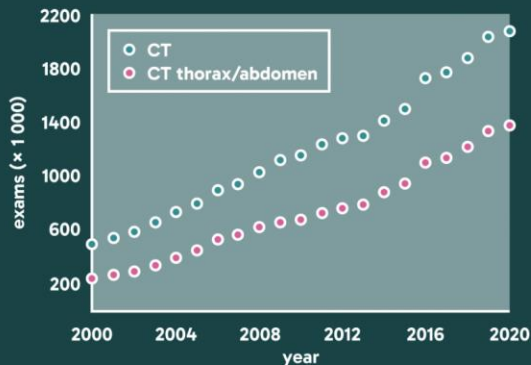
venture
challenge

VC2023 Fall: Meet the teams

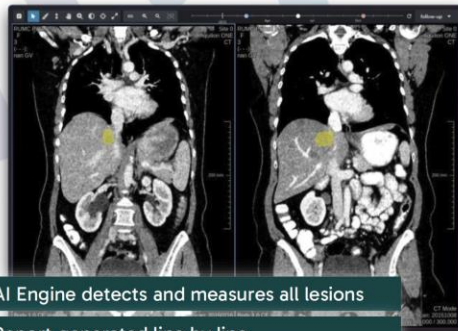


DEMAND FOR RADIOLOGY SERVICES IS ON THE RISE.

Hospitals struggle with increasing workload and a shortage of radiologists.



WE PROVIDE OncoRead:
AN AI PLATFORM FOR
RAPID AND ACCURATE
DIAGNOSIS OF
ONCOLOGY CT
STUDIES.



AI Engine detects and measures all lesions



Report generated line by line



First studies show 2x speedup for reporting

Hospital administrators

more cost-efficient

Radiologists

higher productivity

Oncologists

better treatment decisions

Patients

better outcomes

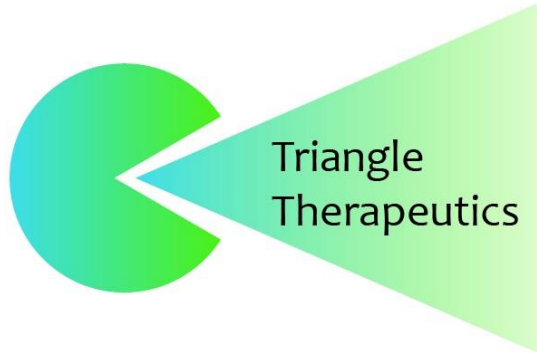
Market size of

€ 280 M

by 2026.



Heparanase inhibition technology prevents metastasis *in vivo*



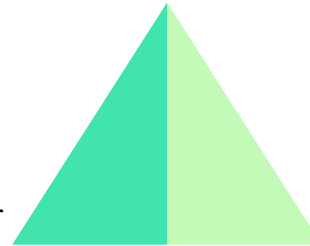
Triangle
Therapeutics

Gijs Ruijgrok: g.ruijgrok@lic.leidenuniv.nl

Vincent Lit: v.a.j.lit@lic.leidenuniv.nl

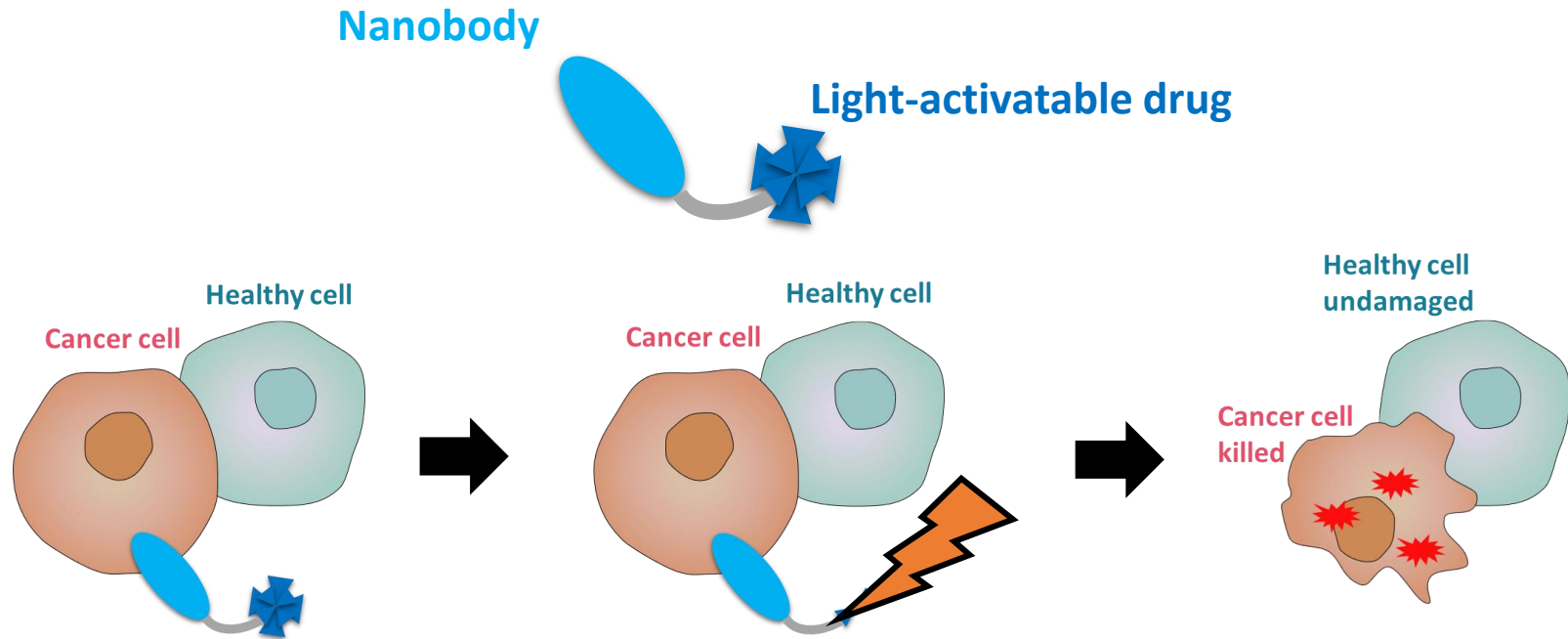
Heparanase inhibition technology

Improve anti-cancer
treatments



Prevent metastasis in 90%
of the cancers

Killing cancer with minimal side effects due to two levels of safety



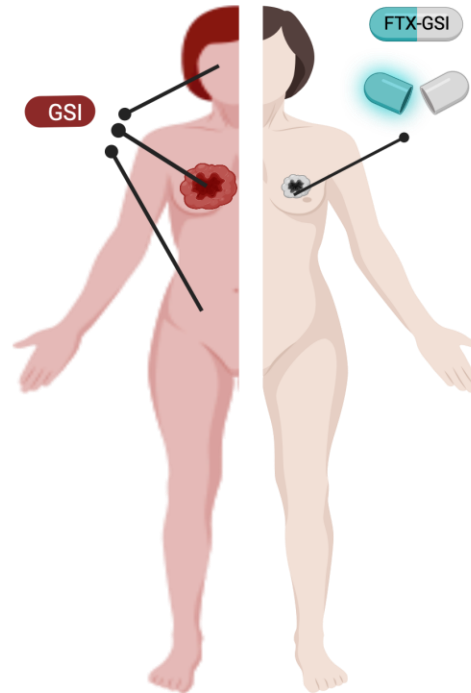
Tumor Specific Notch Inhibition to cure Triple Negative Breast Cancer

Target Specific Treatment

Target AND **Tumor** Specific Treatment

TODAYS TREATMENT

Effective but dose limiting
Side Effects
No Cure
Lives LOST
Negative impact on Society



TOMORROW'S TREATMENT
FENIX-GSI

'drug active in tumor only'

**Compelling preclinical In vivo data
in TNBC tumors**

Effective No dose/duration limit
No side effects
Cure
Lives GAINED
Positive impact Society

**Future: Broad application to
other Notch driven tumors**



depredict

**AI antidepressant
decision support tool**



- First evidence-based decision support tool in mental health
- Seeking 4M investment to enter the market
- 13M revenue in year 7
- Expansion to other mental health disorders
- Let's change mental health care!

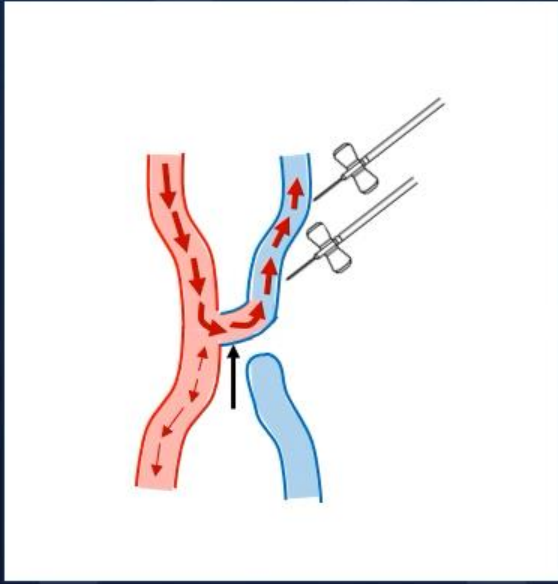


XS Innovations resolves the root cause of hemodialysis access complications: **Continuous high blood flow**

A surgically created artery-vein connection is required for a high-flow vascular access site...

...but the continuous (24/7) high blood flow, results in serious complications...

...which can be resolved by opening the access only during hemodialysis



Poor access patency



Heart failure



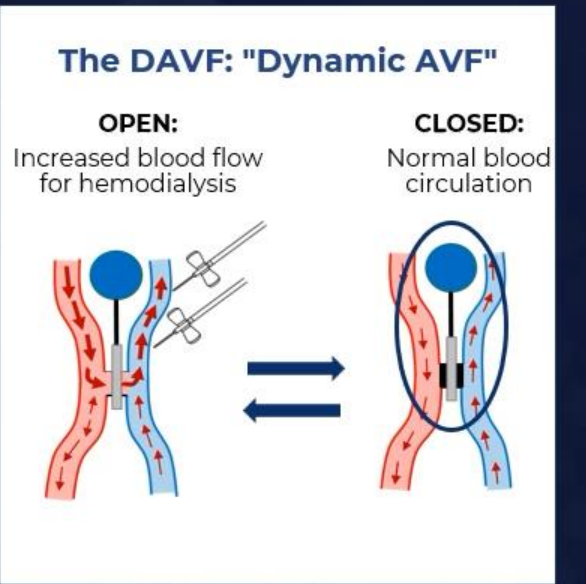
Steal syndrome



Aneurysms



Long compression times and risk of bleeding



venture
challenge

And the winner is...

lifesciences@work

Opportunities
don't just happen,
we create them!

Join our community



www.lifesciencesatwork.nl