

**facio**  
therapies



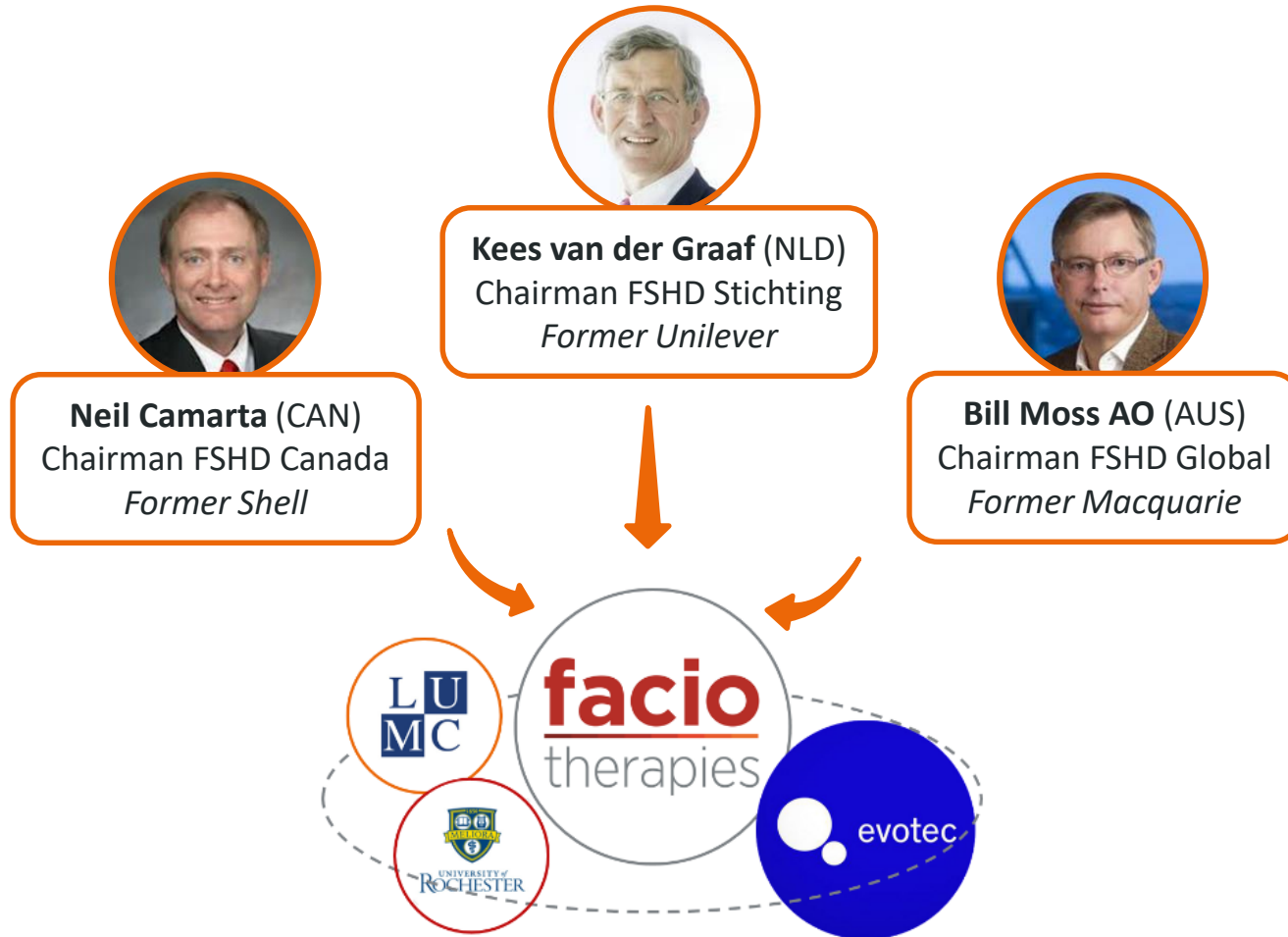
New Business Models  
Dutch Life Sciences Conference  
24 November 2016

# FSHD a devastating disease



Skeletal muscle wasting disease affecting 700,000 patients globally  
There is no therapy

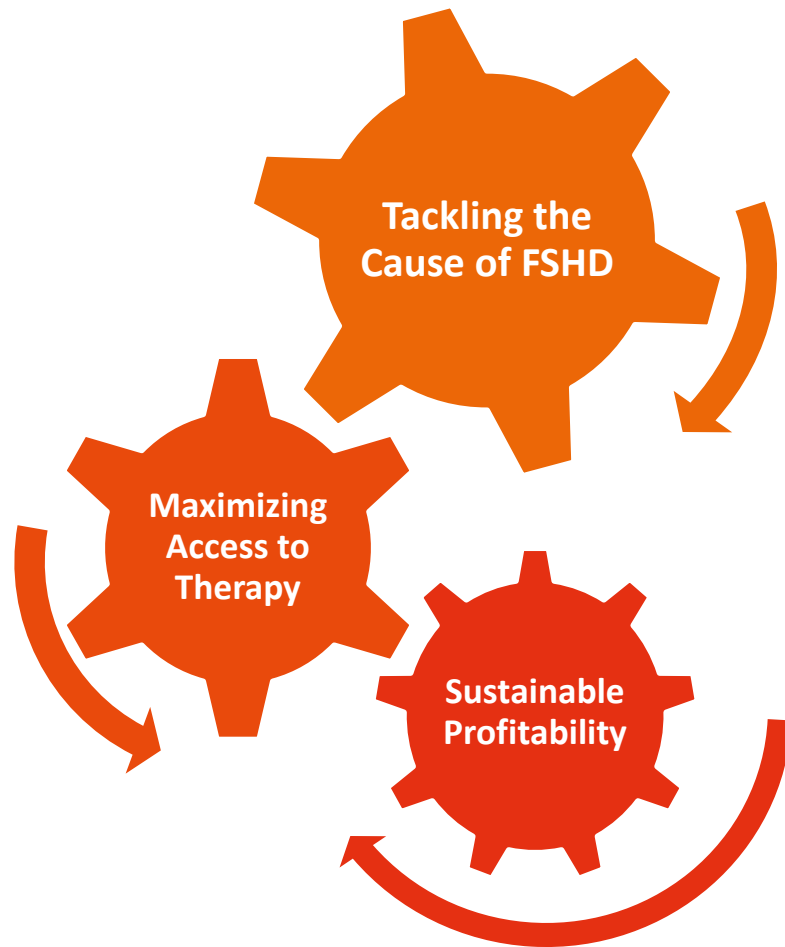
# Facio Structure



# Inspired by Ben & Jerry's



# Business Model



- Established, funded and managed by the community
- Transparent and Accountable
- Affordable Pricing
- Re-invest 50% of future profits
- Fair return to shareholders



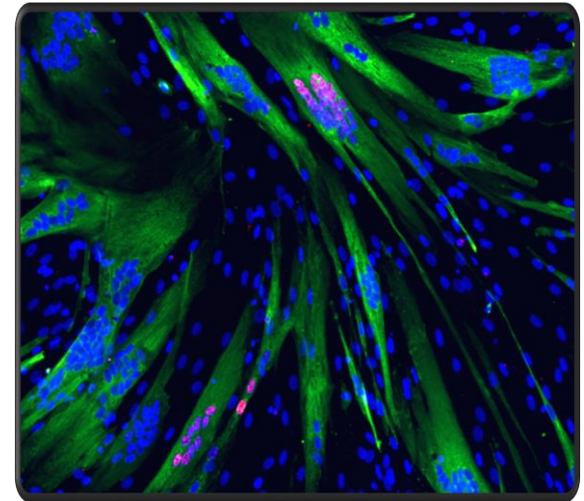
# Progress

## R&D

- Stopping the progression of FSHD by tackling the cause: DUX4
- Breakthrough DUX4 drug discovery platform
- Hits by year-end

## Finance

- € 3,3 M raised from within the FSHD community
- Opening an equity round financing in 2017



*DUX4 (red) in nuclei (blue) of skeletal FSHD muscle cells (green)*

# Take home

- FSHD: a high unmet medical need
- FSHD community took the initiative
- Creating breakthroughs towards FSHD treatments
- Socio-economic business model